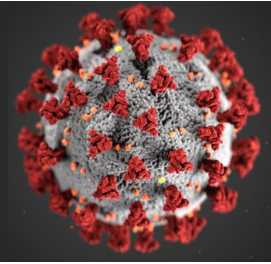


# COVID-19 HUB

## Demographic and Economic Resources

### U.S. Census Bureau

<https://covid19.census.gov/>



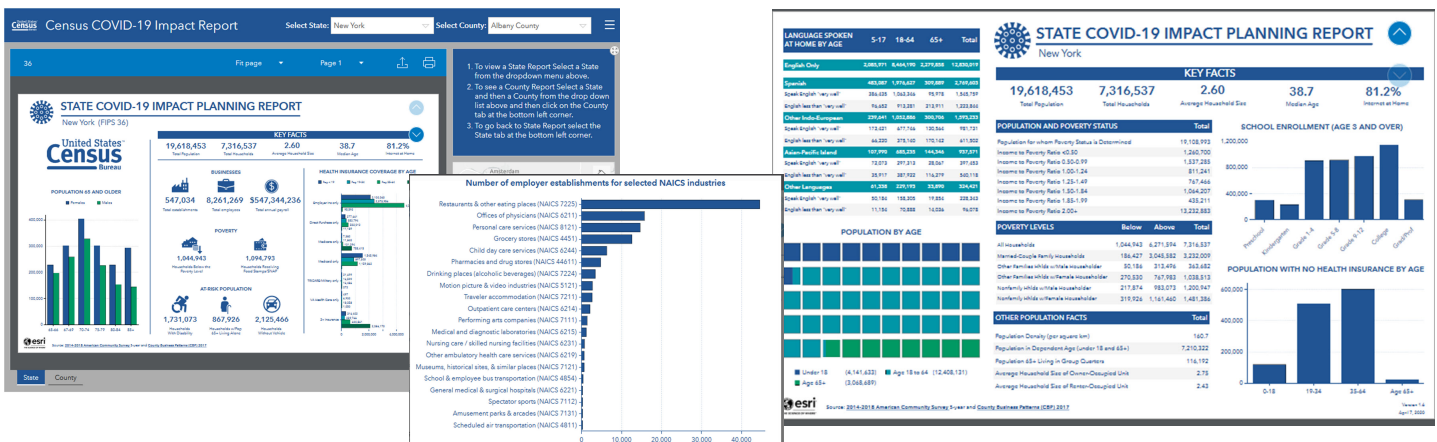
The U.S. Census Bureau's COVID-19 Hub contains demographic and economic data designed to help guide decision-making related to the COVID-19 pandemic. The interactive platform includes key demographic data from the American Community Survey and key data on businesses with one or more paid employees from the County Business Patterns program. The hub was built in collaboration with ESRI and leverages many features of the ArcGIS platform and solution templates.

The platform, released as a beta version, will be updated periodically as the COVID-19 recovery evolves and as we receive feedback from users.

Key features of this platform are described below.

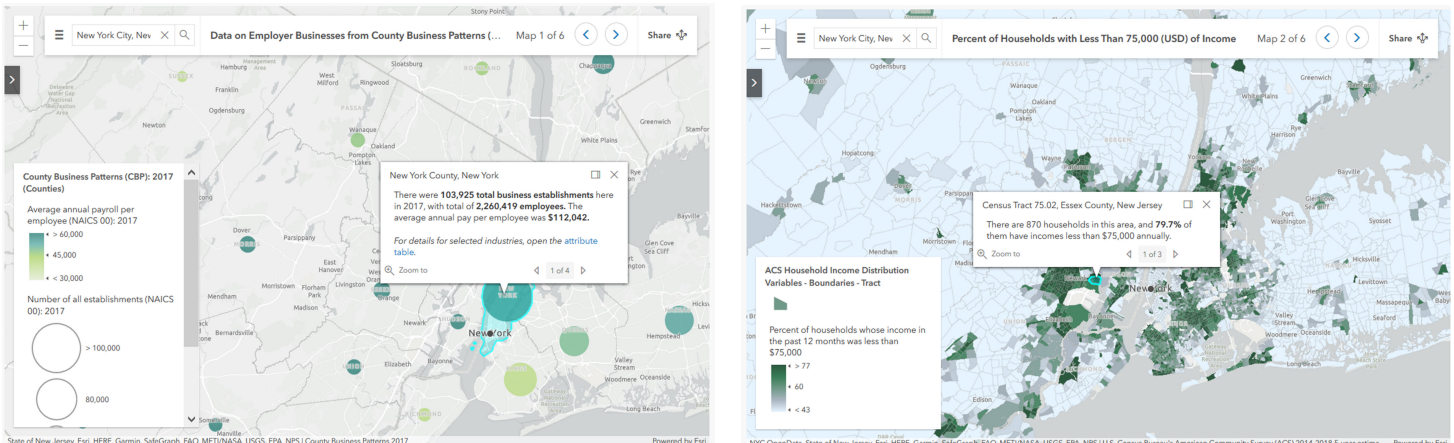
## Impact Planning Report

The COVID-19 Impact Planning Report allows users to browse dashboards with key demographic and business data for the nation, states and counties. Information is presented in an interactive, two-sheet visualization that allows for further exploration and downloading.



## Demographic and Economic Analysis

The Demographic and Economic Analysis policy maps provide additional details for selected statistics in interactive maps that can be incorporated into the user's own products.



## Highlighted Datasets

The Highlighted Datasets allow users to access the interactive maps and layers in ArcGIS for four of the key datasets included in the Impact Planning Report: average annual payroll per employee, people below poverty, household income <\$75,000, and total population over 65. Users can include these datasets in their own mapping products.

**Average Annual Payroll Per Employee (NAICS 00): 2017**

This layer contains 2017 data from the U.S. Census Bureau's County Business Patterns (CBP) program, which includes data on employer businesses by North American Industry Classification System (NAICS) industry. Data for state and county boundaries.

[Read More](#)

**ACS People Below Poverty**

This layer contains the most current release of data from the American Community Survey (ACS) about households that are below poverty. These are 5-year estimates shown by tract, county, and state boundaries.

[Read More](#)

**ACS Household Income < \$75,000**

This layer contains the most current release of data from the American Community Survey (ACS) about household income ranges and cutoffs. These are 5-year estimates shown by tract, county, and state boundaries.

[Read More](#)

**ACS Total Population Over 65**

This layer contains the most current release of data from the American Community Survey (ACS) about total population count by sex and age group. These are 5-year estimates shown by tract, county, and state boundaries.

[Read More](#)

## Categorical Datasets Search

The Categorical Datasets Search banner allows users to select a data theme and to find, reference, and download (in map service and Excel formats) the Census Bureau data that interests them.

## Other Census Bureau Data Products

The site also includes direct links to other Census Bureau data products and tools that provide additional information to guide decision-making. These include the new Business Formation Statistics, data.census.gov, Census Business Builder, and OnTheMap for Emergency Management.

[2020 Census](#)   
 [Business Formation Statistics – Beta](#)   
 [DATA.CENSUS.GOV](#)   
 [Census Business Builder](#)   
 [OnTheMap for Emergency Management](#)   
 [CDC COVID-19](#)

**Business Applications by U.S. State**

Percent Change from 2010 (Year 10 to 2020) Week 15

State:  Region:

Search:

Business Applications With Year to Year Percent Change

Year	2010	2011	2012	2013	2014	2015	2016	2017	2018	2019	2020
% Change	48.4%	2.2%	12.2%	5.7%	15.0%	3.1%	1.7%	2.7%	11.1%	11.1%	10.7%

**OnTheMap for Emergency Management**

Search:

Events as of 04/21/2020

- Northwest Fire
- South Valley Fire
- Spring Ridge Fire
- Spring Mountain Fire
- Spring Mountain Fire
- Spring Mountain Fire
- Spring Mountain Fire
- Spring Mountain Fire
- Spring Mountain Fire
- Spring Mountain Fire

### Contact information:

For questions about the business programs:  
E-mail: [ewd.outreach@census.gov](mailto:ewd.outreach@census.gov)

For questions about the American Community Survey:  
E-mail: [aco.users.support@census.gov](mailto:aco.users.support@census.gov)